



February 2026

Maplewood, New Jersey 07040

www.maplewoodgardenclub.org
www.facebook.com/MaplewoodGardenClub

THIS MONTH'S SPEAKER

EILEEN M. HYLAND *presents*

BEES, INVASIVE BUGS & MORE FEBRUARY 2 AT 7:30 PM

This program is a review of the making of a Beekeeper and includes how honey is made and harvested. The discussion covers nectar flows, swarming and invasive creatures, as well as the role of the spotted lantern fly with regard to honey. This presentation will dispel myths and misconceptions about bees and raise awareness of these incredible insects that are so important to human life.

Eileen is an enthusiastic Beekeeper from Montclair, New Jersey. She operates Stately Hyland Apiaries, also in Montclair. Eileen's interest in beekeeping began in 2017 as a student of the Rutgers Master Gardeners of Essex County and taking part in the organization's "package install" of bees at their Roseland location.

A Certified Master Gardener, Eileen is presently on her way to achieving Eastern Apiculture Society (EAS) Master Beekeeping Certification. Her practical experience includes raising queen bees and nucleus hives, rural farmland beekeeping and commercial apiary inspections. Eileen is also familiar with urban rooftop beekeeping at several locations including the Liberty Science Center.



UPCOMING EVENTS

Monday, Feb. 2 at 7:30 pm
Woodland Parlor
60 Woodland Road, Maplewood

February 28 - March 8
Philadelphia Flower Show
Philadelphia Convention Center

Beginning Saturday, March 14
Potting-up Parties
Upper Greenhouse behind
Town Hall

~ REMINDER ~

The deadline for the March newsletter is **Friday, February 6.**

Send your news items and
photos to
dianemcollins@yahoo.com



GET IN ON THE FUN!

**'POTTING-UP'
PARTIES ARE
HAPPENING!**

**CHECK OUT
ALL THE DETAILS
INSIDE...**



PRESIDENT'S LETTER

FEBRUARY 2026

FEBRUARY IS HERE. We are one month closer to spring! It's time for hearts and late winter flowers. I don't know about you but I think the entire world could use some more love.



I HOPE THAT YOU ARE enjoying the winter and not spending too much time and money on seed catalogs. Remember, we have a free native seed library here by the border of Maplewood and South Orange. Jessica Miller has the Flagship Native Seed Library located at 87 Hixon Place, Maplewood. I have gotten a few packages of seeds from there myself. You should go see their wonderful collection of seeds. Also, remember to plan some spaces for the great plants that you will buy at our stupendous Plant Sale in May. I know that I can always find spots for the beautiful and interesting plants that I find there. And the vegetables! Isn't the picture of the

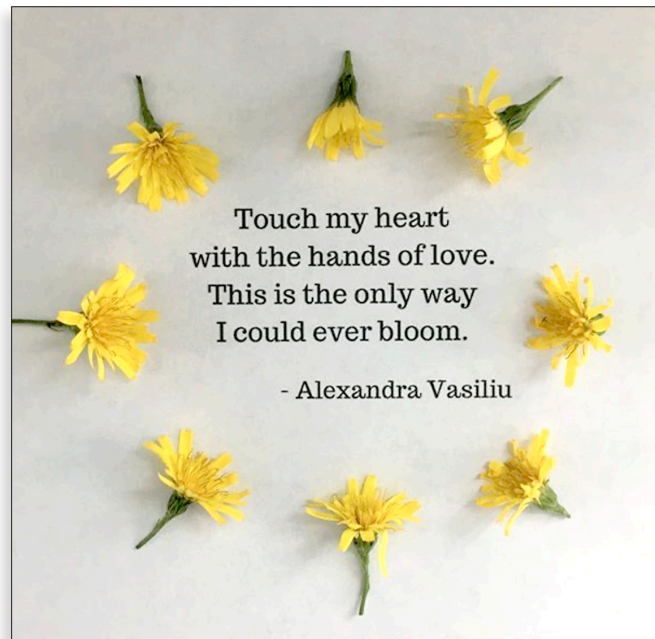
Youth Garden wonderful? It makes me warm just looking at it during this cold time of year. Monika Hannermann is definitely spreading the love and doing such an important thing in our community.

AS I MENTIONED IN January, it is nice to see some color in your yard during the winter. I included a picture of my American Beech sapling. I just love it! The leaves stay on it and are pretty and the bark is so nice.

HERE IS MY POEM for February. Have a Happy Valentine's Day everyone!



American Beech



~ Virginia Nordberg
president@maplewoodgardenclub.org



'POTTING UP' PARTIES!

BEGINNING SATURDAY, MARCH 14

The delivery of thousands of bareroot and plug perennials is fast approaching. Now is the time to sign up for our March 'Potting Up Parties' so that you can join in the fun, spend time with your fellow MGC members, and learn about the 'under world' of plants.

Every March MGC members come together in the warmth and sunshine of the Upper Greenhouse behind Town Hall to pot up thousands of plants so they can start growing outside in coldframes and inside the greenhouse to be ready for the May plant sale. This is one of MGC's most popular hands-on activities. What gardener isn't anxious to get their hands into soil in March and to start dreaming of what the upcoming gardening season could be – and make their list of what plants to buy at the sale.

This year's dates and times for the potting up are:

Saturdays, March 14 & 21	10 am - Noon & 2 pm - 4 pm
Sundays, March 15 & 22	2 pm - 4 pm
Mondays, March 16 & 23	10 am - Noon
Thursday, March 19	10 am - Noon

Please contact me via email (nial590@verizon.net) or call (973) 762-4136 to sign up to help. A clipboard will be passed around at the February and March meetings. We need **extra help on March 14 and 15** to take the plants up to the coldframes. I will be in touch with everyone to confirm their time slot and as a reminder.

I hope to see you at the Party!

~ Laura Nial (973) 762-4136 nial590@verizon.net

PHILADELPHIA FLOWER SHOW TRIP

TUESDAY, MARCH 3 AT 9:30 AM
MAPLEWOOD POOL PARKING LOT
187 BOYDEN AVENUE, MAPLEWOOD

This year's Philadelphia Flower Show's theme is **ROOTS: ORIGINS OF AMERICAN GARDENING**. Gardens aren't just made; they're passed down through generations.

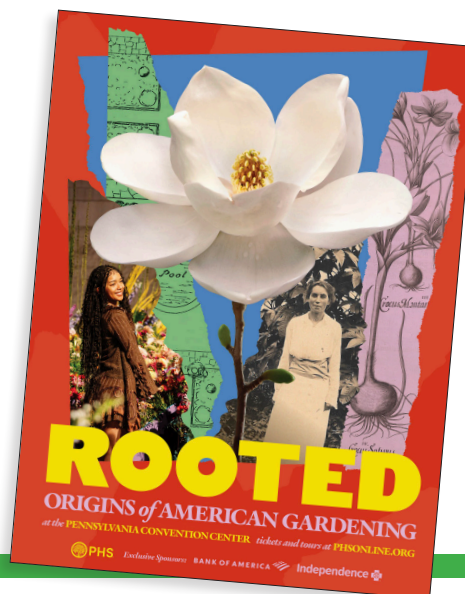
In the spirit of Philadelphia and our nation celebrating the 250th anniversary of American Independence, the Maplewood Garden Club is inviting all on a trip to the Philadelphia Flower Show on **Tuesday, March 3, 2026**. We will meet at **9:30 am** in the Maplewood Pool parking lot at 187 Boyden Avenue. A luxury coach, which has a bathroom and WiFi, will depart promptly at **10:00 am** and will return us to the same location around **7:45 pm**.

Transportation, entry to the show, and light refreshments (to be provided on the bus) are all included for **\$70 for MGC members and \$85 for non-members**.

So call your friends to join us on this exciting adventure to escape the winter doldrums. Information on the show can be found on the PFS website. Please contact Gary Bierman so he can get a headcount at gbird101@aol.com or call (917) 975-5255. The official **deadline for receipt of payment is February 19** - NO WIGGLE ROOM. Please make your check payable to "The Maplewood Garden Club" and mail to: Gary Bierman, 14 Highland Place, Apt. J, Maplewood, NJ, 07040. Be sure to include your phone number on the front of the check.

Reservations are first come, first served, and limited to 45 people. In addition, there will be a sign-up sheet at the upcoming general meeting.

~ Gary Bierman (917) 975-5255 gbird101@aol.com



MEMBERS KEEPING IN TOUCH

👋 Last month Sarah Guardia passed her last ARE Exam to become a licensed Architect of NY! She wants to say thank you to Club members who supported her along the way. Congratulations, Sarah!



- 👋 Another surgery for Bill Kohlman for his foot. Hope this will be the last one and no more problems. Good luck from us!
- 👋 We hope that member Sarah Riegelman has a speedy recovery from her hip replacement. Get a strong hip for all the work ahead at the Plant Sale.
- 👋 Congratulations are in order for Jennifer Richardson, who is retiring from The Port Authority of New York and New Jersey this month. Now, lots of time for gardening!

~ Evie Bharucha (973) 763-6875 bharucha@verizon.net

COLEUS UPDATE

The third day of January 2026 found a team of hard-working Club members in the Quoset, busy taking cuttings from our coleus "mother" plants. And what a job they did! Not gonna lie, it looks like we have 60-ish varieties!

We want to thank Diane Benjamin, Vicky Borrone, Francine Colon, Karen Donovan, and Terry Kohn for devoting a few hours to the effort. We very much appreciate you and the fantastic job you did.

We started later than usual this year (on purpose), and we are helping the cuttings along by using heating mats. So far, so good.

~ Liz Demkin and Jennifer Richardson



SAVE THE DATE FLOWER SHOW SCHOOL (INCLUDES HORTICULTURE)

**TUESDAY, APRIL 14 and WEDNESDAY, APRIL 15
RUTGERS UNIVERSITY - HOLLY HOUSE IN EAST
BRUNSWICK, NJ**

Interested in further education in floral design and general horticulture? The Garden Club of New Jersey is offering classes April 14 and 15, and our Club members can sign up to take classes one or both days for **\$90 per single day or \$170 for both days**. It's a lot of fun and a great opportunity to pick up new ideas on floral design and general horticultural practices while also learning what judges are looking for in your exhibits. Participants can take the course for credit towards becoming a flower show judge or as a learning experience.

April 14: Horticulture Curriculum

The horticulture curriculum consists of basic general information on proper gardening techniques from seed / plant selection to plant culture and control of problems. Information is also presented on cultural needs of specific perennials, annuals, trees and shrubs, as well as fruits, vegetables and nuts and how to grow superior container plants.

April 15: Design Instruction

Design instruction covers traditional floral arrangements through contemporary styles and even designs incorporating lights and motors. Many attendees are particularly interested in table setting designs showing coordination of floral centerpiece, linens and dishes. Vignettes, small segments of rooms, also give ideas on interior decorating.

Classes are held at Rutgers University - Holly House in East Brunswick, NJ. If interested in attending, contact Sue Tully for more information or go directly to the GCNJ website at www.gardenclubofnewjersey.org and look for "Schools" in the black banner. Upon opening "Flower School Show," there is a link to the registration form that gives more information.

~ Sue Tully (862) 266-3991 stullynj@gmail.com

CONSERVATION CORNER

FEBRUARY 2026

The days are lengthening and I am thinking about seeds. In addition to gradually sowing the many seeds I've purchased over the years, recently I started saving my own—things that I like the look and taste of.

For years I thought there was some big mystique to saving seeds, and that I had to learn the secrets before I could be successful. But this past year several friends shared with me little envelopes or vials of some of their garden favorites, so as last summer turned to fall, I began to simply let some flower heads, fruits



and vegetables dry thoroughly on the plants. I then popped the seeds in Ziploc bags and put them in the refrigerator. I'm really looking

forward to germinating some of my favorites—zinnias, cosmos, rudbeckia, beans—both those I've saved and those shared by friends. I love sharing plants with loved ones.

I recently listened to a presentation by NJ's Tomia MacQueen of Wildflower Farm. She was talking about

the importance of saving seeds (lower environmental impact, less reliance on seed companies, returning to ancient

traditions, preserving seed sovereignty, lower cost, etc.) The seed saving cooperative she participates in Ujamaa Farms (ujamaafarms.com) is a global network of seed savers. Ujamaa came to the aid of Ukrainian farmers in the early days of the war with Russia, by growing sunflower seeds and sending them back. Tomia quoted Ira Wallace, Southern Exposure Seed Exchange (www.southernexposure.com) who calls seed saving "an act of revolution." Ms. Wallace's story is detailed in the documentary *Open Sesame, The Story of Seeds*, which you can watch on Amazon Prime Video. It's definitely on my list of movies to see this winter. (I love a good peaceful revolution.)

I hope I have piqued your interest in the wonder of saving seeds. This lovely website has lots of great, detailed information www.growinginthegarden.com/how-to-save-seeds. And if you have old seeds from years past don't give up on them! There is probably life inside them.

~ Virginia Lamb virginialamb1@yahoo.com



ADIOS DICKENS VILLAGE

The 2025-2026 Conservatory in Dickens Village has been put to bed. We enjoyed our years of putting together a new and engaging display each year and we want to give another crew the chance to stretch their creativity going forward. This is a fun and rewarding activity that brings cheer to our community, and is a crowd favorite.

If you're asked by our next president to take over this committee, please consider taking on this worthwhile and much-appreciated endeavor.

~ Liz Demkin and Maria Mulkern

DO YOU HAVE A PLANT THAT YOU'RE WONDERING ABOUT?

Just send in a photo or even a description. Our knowledgeable Club members might be able to help you out! Send it to Diane at dianemcollins@yahoo.com with the subject line **Can you identify this plant?**

How Does Your Garden Grow?



February plays a vital role in setting the stage for spring. In February you can plan your growing season, prune your perennials, prepare your soil, and start early sowing.

Planning: Review previous year planting for crop rotation, this helps to reduce pests and improve soil health. Order seeds or use the saved seeds from previous year, review the previous year's garden performance and note successes and challenges. Design garden layouts and planting schedules.

Pruning: Cut back perennial plants that were left standing over winter. Remove dead, damaged, or diseased branches from shrubs and fruit trees to improve aeration and shape.

Soil preparation: Healthy soil produces healthy plants, so test your soil for nutrient levels and pH if the ground is workable. Add compost or mature manure to improve soil structure and fertility. Apply mulch to protect soil and retain moisture.

Seed sowing: Start seed sowing indoors for vegetables and flowers with long growing seasons. Provide adequate light and warmth for seedlings.

Start seeds that need a long growing season:

Tomatoes • Peppers • Eggplant
Broccoli • Cabbage • Cauliflower
Herbs (basil, parsley, thyme)

Flowers that grow in February:

Pansies • Snapdragons • Calendula
Sweet peas • Alyssum

For more information visit

www.gardeningsolutions.ifas.ufl.edu

~ Olapeju (PJ) Adeniji



Jen Lieberman awarding Rex Freedman the Columbia High School Scholarship at last June's Annual Meeting.

SCHOLARSHIPS

We received this lovely note from one of the recipients of our scholarship.

Dear Maplewood Garden Club,

I am Rex Freedman, the recipient of the Columbia High School Scholarship Fund 2025 scholarship. I hope you all have enjoyed your holiday and enjoyed your start to 2026. I am writing to inform you that I have had a good first semester at Virginia Tech. My classes have had me studying environmental geography and other interesting topics such as the Geography of music, urbanization, and history. I'm even expecting to make the Deans list!

One fun point of interest is that Virginia Tech's campus has a large horticulture garden that is worth checking out if any Club members are in the region. There are also a number of greenhouses, including one that contains a rare corpse flower named Stinky Pete.

Best of luck with your gardens and sale later this year! Thank you again for the scholarship and the opportunities it has provided for me to pursue my studies in geography and the environment.

Thank you for your time,
Rex Freedman

EXHIBITORS CORNER

All designers should refer to Chapter 7 of the latest version of the "National Garden Clubs, Inc., *Handbook for Flower Shows*", (revised July 2024), for more detail. The *Handbook* is available on the MGC website maplewoodgardenclub.org under, **Calendars** → **Design Exhibit Schedule** → **National Garden Club-Handbook for Flower Shows** (blue link). Not all design requirements are listed in this newsletter.

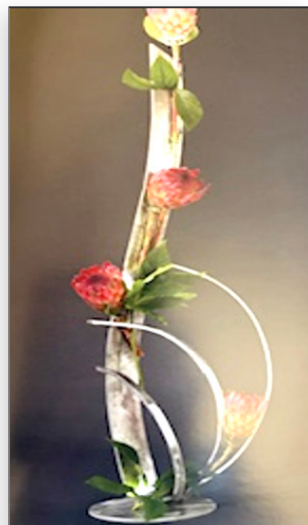
ARTISTIC DESIGN February's theme is "Ice Storm Warning: Monochromatic – White or Light-Colored Flowers and/or Spikey Shaped Flowers or Foliage."

Novice designers are to create a "Transparency Design" – Chapter 7, pages 72 and 77 of *Handbook for Flower Shows*. This is your chance to try a more challenging, creative design. Transparency Design is a three-dimensional design type which requires viewing of some components of the arrangement through others. See through components added to the design may be traditional transparent material such as glass or plexiglass, or other "see through" materials such as screening, open weave fabric or bare branches. The example below uses coral sea fans and a bent metal sculpture to create the transparent views.

Intermediate level designers are to create a "Reflective Design". Reflective Design has components within the design that reflect an image back to the viewer. Placing the design on or in front of a mirror misses the mark, the reflective elements need to be incorporated into the design. Refer to Chapter 7, page 75 of *Handbook for Flower Shows* for more details. The example below makes use of a reflective metal sculpture to reflect parts of the design back to the viewer.



Transparency Design example



Reflective Design example

FEBRUARY EXHIBITS

ARTISTIC DESIGN

Please read "Artistic Division Rules" on page 13 in the current yearbook, as well as the 2017 revised edition of the *Handbook for Flower Shows* (see above).

Theme: Ice Storm Warning: Monochromatic – White and/or Lightly Colored Flowers and Spikey-Shaped Flowers or Foliage

Challenge: Parallel Design, see *Handbook*, p. 75.

Intermediate: Reflective Design, see *Handbook*, p. 75.

Novice: Transparency Design, see *Handbook*, pp. 72 & 77.

Open: Designer's Choice (one entry per member)

HORTICULTURAL EXHIBITS

Please read "Horticulture Division Rules" on page 13 in the current yearbook, as well as the 2017 revised edition of the *Handbook for Flower Shows* (see above).

1. **Vining plant**, potted (container not to exceed 10" radius)
2. **Aloe leaf**, potted (container not to exceed 10" radius)
3. ***Santpaulia ionantha* (African Violet)**, potted
4. **Open** (maximum 2 entries per person)

REMINDERS:

- Judging starts at 7:15 pm. Please clear the area of the exhibit tables so the judge and exhibit team can score your plant material and designs.
- Please do not interrupt the team while they are judging; they are working as quickly as possible so that the guest speaker can begin.

Thank you for bringing in your horticultural exhibits and floral designs for all to see! The Exhibits team deeply appreciates your involvement in the monthly exhibits.

~ Vicky Borrone (973) 763-0633 mborrone@hotmail.com
Sue Tully (862) 266-3991 stullynj@gmail.com

Happy Valentine's Day
Everyone!

